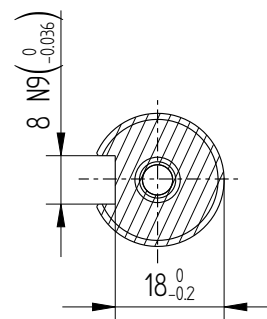
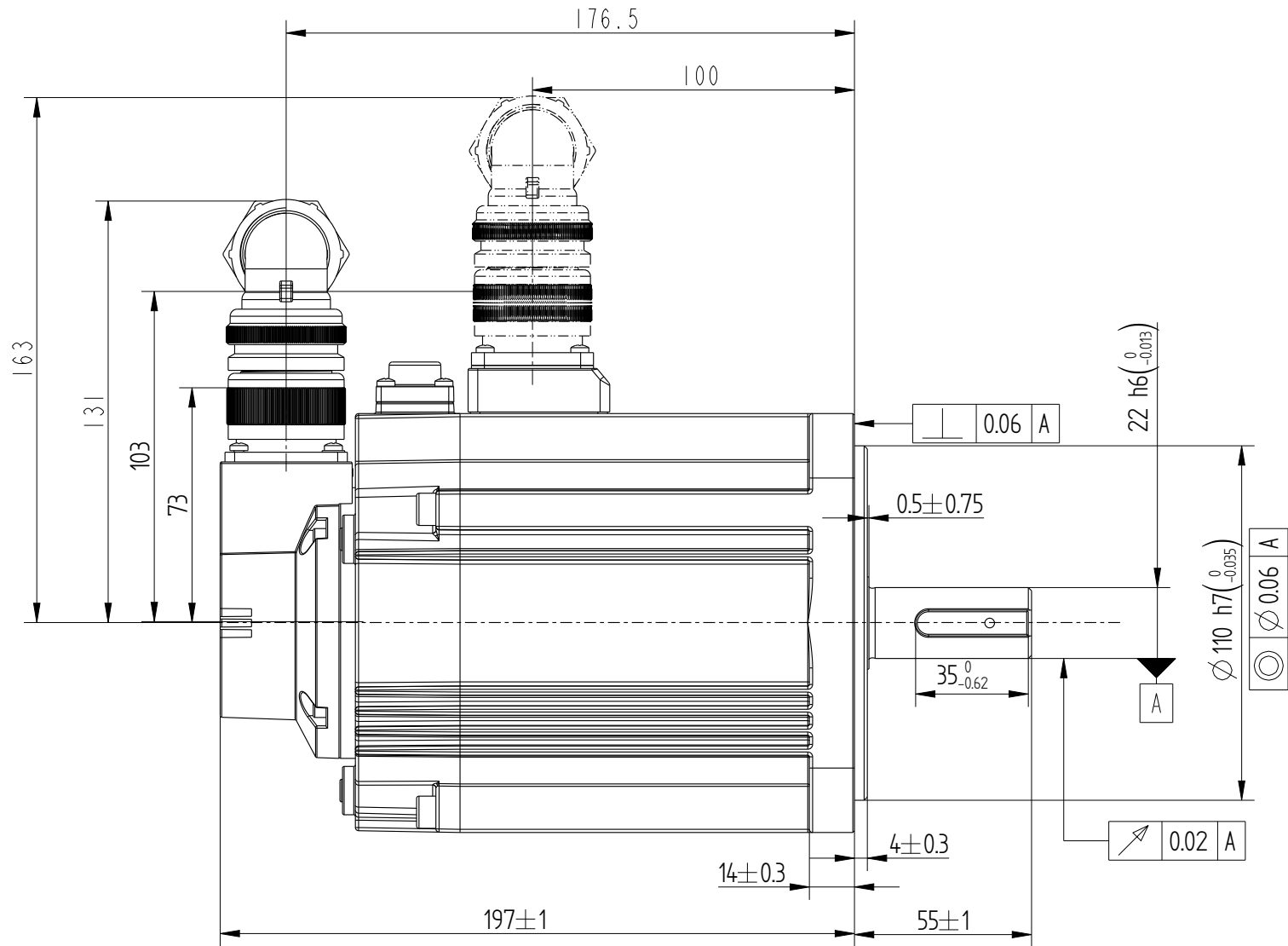
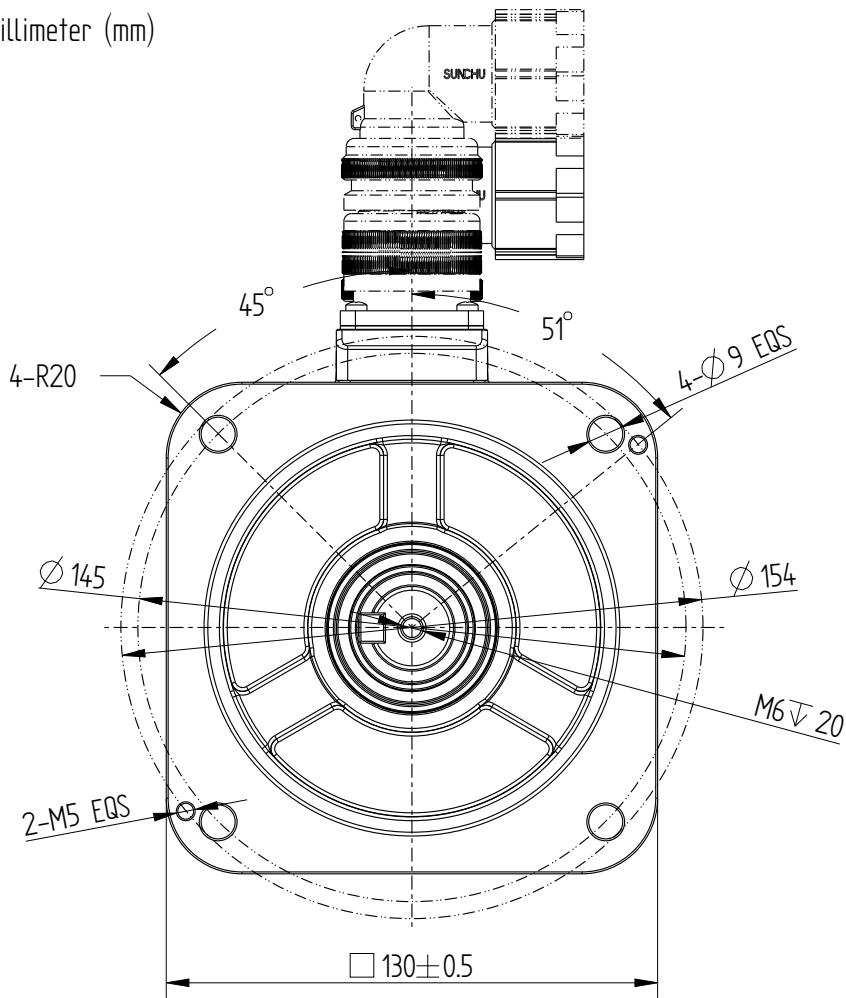
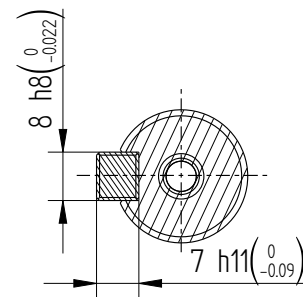


Amendment	Description

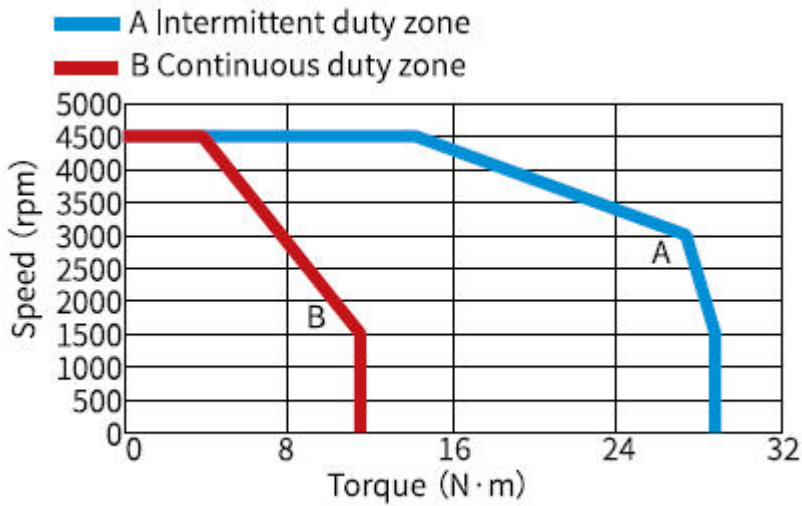
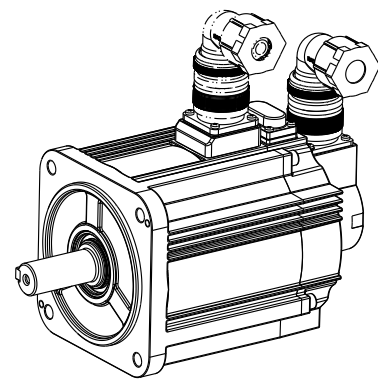
Unit: Millimeter (mm)



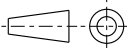
Dimension of shaft end



Dimension of shaft end with key



Basic function patmeters	
Rated power kW	1.8
Rated voltage V	220
Rated current A	11.9
Peak current at rated speed A	32.2
Rated torque Nm	11.5
Peak torque at rated speed Nm	28.75
Rated speed rpm	1500
Max speed rpm	4500
Rotor inertia kg·cm <sup>2</sup>	27.2±10%
Encoder resolution	23bit
Insulation class	F(155)
Protection level	IP67
Static torque of brake Nm	≥16
Brake power supply V	DC24±10%
Brake backlash°	≤1
Duty cycle	S1
Radial load N	≤686
Axial load N	≤196

				Motor outline Drawing			01118011-WX		
B02	Replace	/	/						
Version	Change method	Changed by	Date						
Design	/								
Check	/			/			Mark		INOVANCE
Craft	/								
Verify	/								
stangardization	/			Weight	Scale	Version	Page 1 of 1		
Approve	/			10.3kg	12	B02	Model	MS1H3-18C15CB-A334R-INT	